

POKORNYI ENGINEERING

RALLY

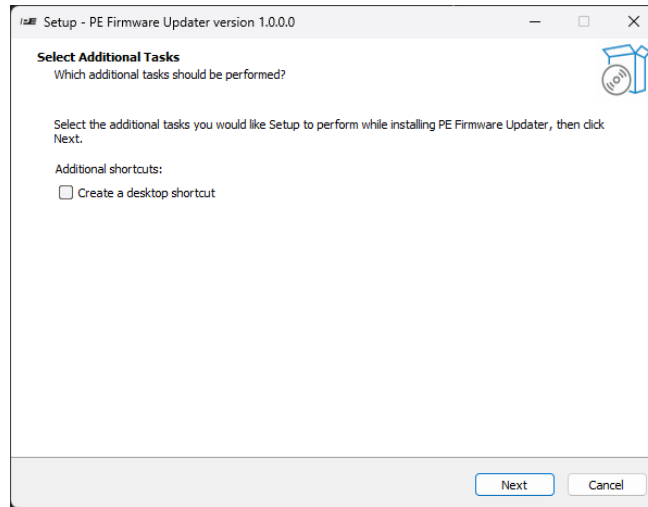
Firmware Update Guide



POKORNYIENGINEERING.COM

1 INSTALL PE FIRMWARE UPDATER

Install [PE Firmware Updater](#) on your PC. This program will install the required driver for DFU (Device Firmware Update) mode.



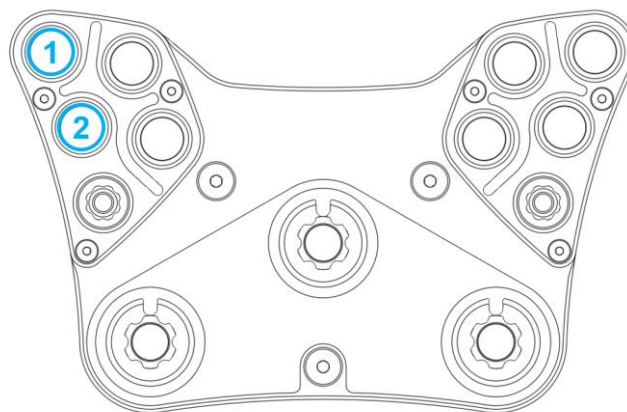
2 ENTER BOOTLOADER MODE

To enter in bootloader mode, press and hold **BUTTON 1** and **BUTTON 2** continuously as shown below while you connect the wheel to the PC. (The buttons have to be pressed while powering up the wheel.)

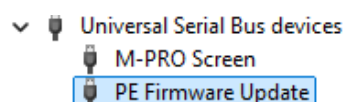
Firmwares below v2.0 do NOT have bootloader!

If your device has older firmware, you'll need to upload the bootloader first, as outlined in the DIY guide. Once the bootloader is installed, you can update the wheel using a USB connection.

Ready-made RALLY Button Plates all have bootloader and can be updated with this method.

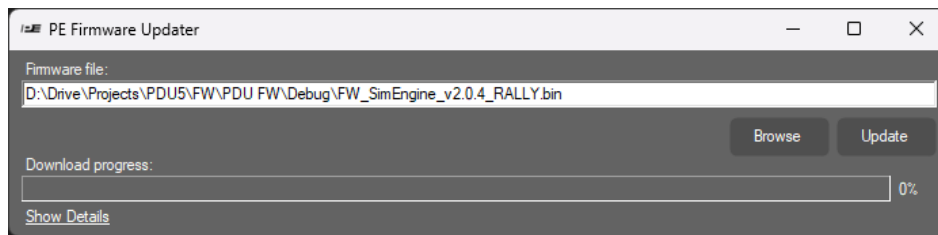


If you successfully entered boot mode, a "PE Firmware Update" device will appear in the device manager under *Universal Serial Bus devices* section.

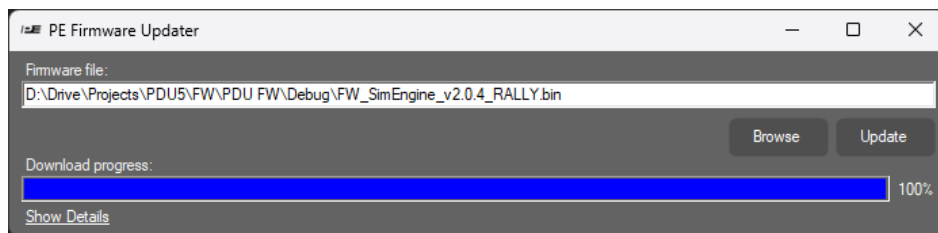


3 UPLOAD THE LATEST FIRMWARE

Start the PE Firmware Updater application. Click “Browse” and select the latest [firmware file](#).



Click “Update” and wait until the firmware download to the device completes. Once it’s done, the progress bar will switch to blue.



(By clicking “Show Details” you can check the logs. Please ignore “Invalid DFU suffix signature” message, that feature is unused in the util.)

4 RESTART THE DEVICE

Disconnect, wait 10 sec and re-connect the USB cable of the device.

You are done with the firmware update!

5 REMARKS

- SimEngine 2.x.x requires **SimHub 9.4.10** or higher!
- The clutch paddles have to be re-calibrated after firmware update.
- When updating a major version (e.g. v1.x → v2.x) then the device might have to be re-assigned in-game.
- SimHub LED profiles made for firmware versions v1.x are not compatible with SimEngine v2.x.